



**American Association
of Equine Practitioners**

Horse Health Education

UNDERSTANDING EQUINE STRANGLES

www.aaep.org/horseowner



HORSE HEALTH EDUCATION: EQUINE STRANGLES

OVERVIEW



- What is strangles?
- Signs of the disease
- Diagnosis
- Treatment
- Management of the farm
- Vaccination
- Prevention



HORSE HEALTH EDUCATION: EQUINE STRANGLES

WHAT IS STRANGLES?

- Bacterial infection with *Streptococcus equi* subspecies *equi* (*S. equi*)
- Bacteria typically infects the upper airway and lymph nodes of the head and neck
- Highly contagious in horse populations, but not generally to people
- Primary source of recurrent infections is asymptomatic shedders



HORSE HEALTH EDUCATION: EQUINE STRANGLES

SIGNS OF INFECTION



- Fever (temperature 101.5° F)
- Enlarged lymph nodes
 - Submandibular
 - Retropharyngeal
- Purulent nasal discharge
- Depression
- Difficulty swallowing



HORSE HEALTH EDUCATION: EQUINE STRANGLES

SIGNS OF INFECTION

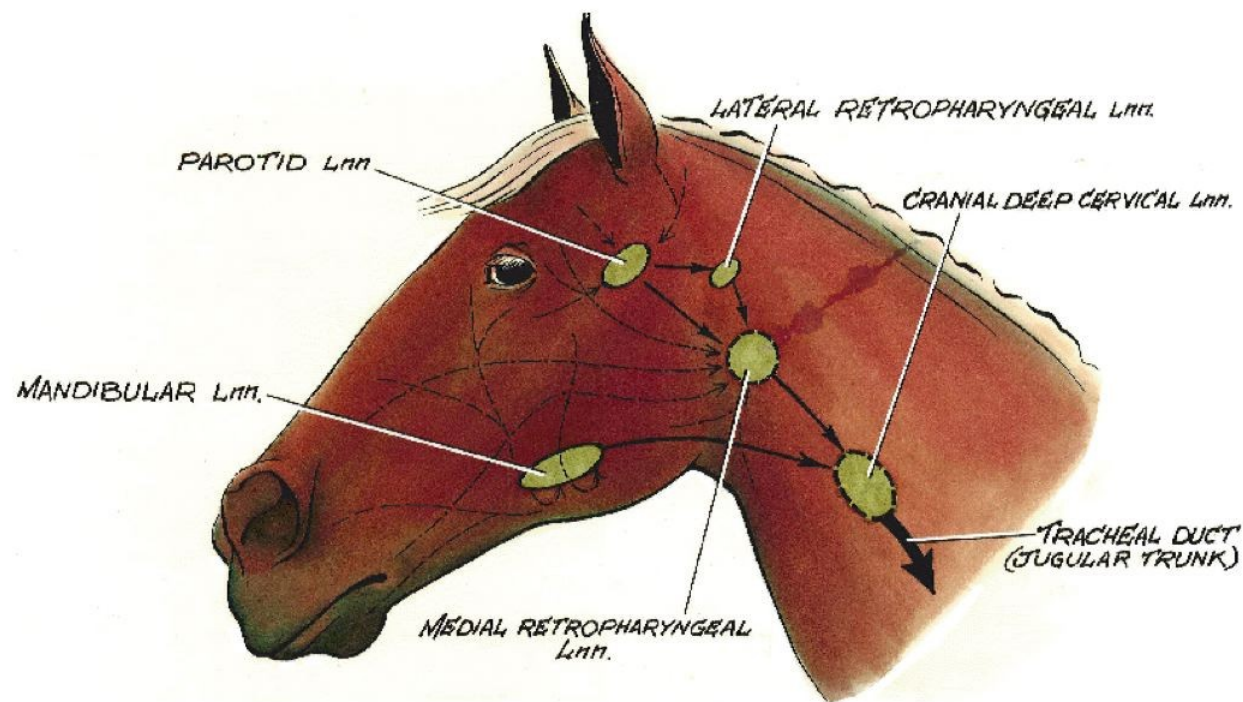


- Respiratory distress
- Noise when breathing (stridor)
- Extended head and neck
- Lymph nodes rupture and drain from skin
- Retropharyngeal lymph nodes rupture and cause infection in the guttural pouch (empyema)



HORSE HEALTH EDUCATION: EQUINE STRANGLES

LYMPH NODES





HORSE HEALTH EDUCATION: EQUINE STRANGLES

THE GUTTURAL POUCH



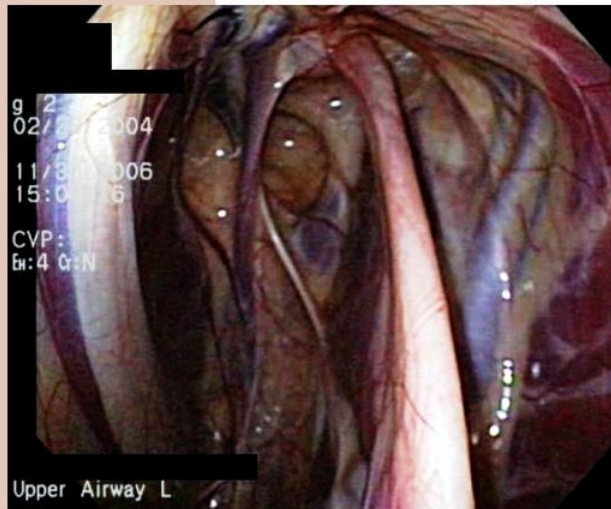
Guttural pouches are air filled spaces within the head that are an expansion of the Eustachian tubes.

It is hypothesized that horses use air in guttural pouches to cool the arteries during exercise and keep the brain from overheating.



HORSE HEALTH EDUCATION: EQUINE STRANGLES

INFECTION OF THE GUTTURAL POUCH



Normal guttural pouch view, but pus collects on the ventral floor in cases of empyema with strangles.



HORSE HEALTH EDUCATION: EQUINE STRANGLES

COMPLICATIONS OF INFECTION



- Spread to lymph nodes outside of head/neck
 - Called Metastatic or “Bastard” Strangles
- Immune mediated disease
 - Purpura hemorrhagica
- Muscle inflammation and pain (myositis)
- Lack of milk production
 - Likely secondary to fever and poor appetite



HORSE HEALTH EDUCATION: EQUINE STRANGLES

COMPLICATIONS OF INFECTION

Chondroids are inspissated pus that occur in the guttural pouch often as a result of chronic guttural pouch infection (empyema).





HORSE HEALTH EDUCATION: EQUINE STRANGLES

COMPLICATIONS OF INFECTION



- Occurs in about 20 percent of cases
- Increase case fatality rate
- Require longer and more intensive treatment
 - Typically antibiotics



HORSE HEALTH EDUCATION: EQUINE STRANGLES

DIAGNOSIS OF STRANGLES



- Signs of infection are highly suggestive
- Definitive diagnosis via culture
 - Nose
 - Guttural pouch
 - Lymph node
 - Nasopharyngeal wash
- Polymerase Chain Reaction (PCR)
 - Most sensitive



HORSE HEALTH EDUCATION: EQUINE STRANGLES

DIAGNOSIS

- The challenge is ASYMPTOMATIC CARRIER horses
- Four to 50 percent of horses on farms with recurring strangles are carriers of the bacteria
- All horses that had signs of infection should be tested 3 times and be negative on all before being reintroduced to healthy horses
- Shedding can occur for weeks to months after infection in most horses
 - Rare cases may shed for years
 - Continual source of new infections



HORSE HEALTH EDUCATION: EQUINE STRANGLES

DIAGNOSING CARRIERS

There are three methods to confirm diagnosis of strangles:

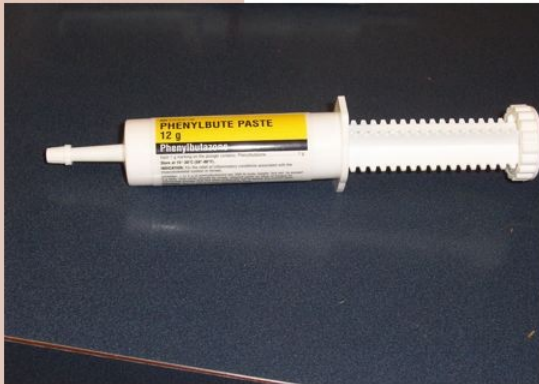
- Culture bacteria from the nasal discharge or abscess
- PCR of nasopharyngeal washes or guttural pouch samples
- Blood test (serology) all animals on farm, even horses that have not had evidence of infection





HORSE HEALTH EDUCATION: EQUINE STRANGLES

TREATMENT OF STRANGLES



- ISOLATE ALL HORSES WITH FEVER
- Do not treat without your veterinarian
- Hot pack and flunixin meglumine or bute can be used for supportive care
- Antibiotic therapy remains controversial



HORSE HEALTH EDUCATION: EQUINE STRANGLES

TREATMENT

- Uncomplicated cases do NOT require antibiotics
- Complicated cases often require antibiotics and other treatments (tracheostomy, etc.)
 - Penicillin usually antibiotic of choice, others are also effective
- If antibiotics are used, treatment course is usually weeks or longer to completely clear infection
- Remember that early treatment in uncomplicated cases may prevent immunity to infection



HORSE HEALTH EDUCATION: EQUINE STRANGLES

MANAGEMENT OF AN OUTBREAK



- Call your vet immediately
- Strangles is a reportable disease in many states
 - Not in Texas
- STOP movement of horses and do not allow new horses to enter the farm
- Take temperatures (normal 99-101.5° F)



HORSE HEALTH EDUCATION: EQUINE STRANGLES

OUTBREAK MANAGEMENT



- ISOLATE HORSES AT THE FIRST SIGN OF FEVER
- Infected horses can transmit the bacteria to a healthy horses one to two days after onset of a fever



HORSE HEALTH EDUCATION: EQUINE STRANGLES

OUTBREAK MANAGEMENT



Create three groups of horses:

1. Infected horses
2. Horses that have been exposed to or contacted infected horses
3. Clean horses with NO exposure

NO nose to nose contact or shared water or feed buckets should be allowed within the groups.



HORSE HEALTH EDUCATION: EQUINE STRANGLES

OUTBREAK MANAGEMENT

- Clean horses with no exposure should be housed separately in an area where infected horses have not been kept:
 - ALWAYS handle clean horses first
 - Ideally – separate caretakers
 - Separate cleaning equipment, grooming tools, water buckets, pasture, etc.



HORSE HEALTH EDUCATION: EQUINE STRANGLES

OUTBREAK MANAGEMENT



If the same people must work with all the horses, dedicated protective clothing **MUST** be utilized.

Remember to wear boots, gowns or coveralls and gloves.

Thoroughly disinfect equipment between horses (tack, pitch forks, brushes, etc.).

*Read the label on disinfectants to be sure they are used at the correct dilution and are active against *S. equi*.*



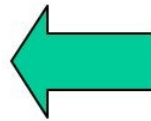


HORSE HEALTH EDUCATION: EQUINE STRANGLES

OUTBREAK MANAGEMENT



Correct



Not this!



HORSE HEALTH EDUCATION: EQUINE STRANGLES

OUTBREAK MANAGEMENT



- People and equipment can transfer the infection from horse to horse
- Disinfection and hand washing are critical!



HORSE HEALTH EDUCATION: EQUINE STRANGLES

CLEANING AND DISINFECTION



- Water and feed troughs should be cleaned and disinfected daily
- Stalls should be cleaned after manure removal





HORSE HEALTH EDUCATION: EQUINE STRANGLES

CLEANING AND DISINFECTION



- Manure and waste feed should not be spread on pastures
 - Compost in isolated location
- Pastures used to house infected horses should be rested for four weeks



HORSE HEALTH EDUCATION: EQUINE STRANGLES

IS THERE A SOLUTION?

- What about vaccination for my whole herd?
 - Indications for vaccination
 - Can you administer during an outbreak?



HORSE HEALTH EDUCATION: EQUINE STRANGLES

VACCINATION FOR STRANGLES

- Vaccination is one method of prevention and control
- Vaccination cannot guarantee disease prevention
- Vaccination will likely reduce disease severity in horses that may become infected

Consult with your veterinarian for further information.



HORSE HEALTH EDUCATION: EQUINE STRANGLES

VACCINATION FOR STRANGLES



- Available vaccines are intranasal and intramuscular
- Improper administration can result in poor protection or complications at injection site
- Intranasal vaccination provides the best local immunity



HORSE HEALTH EDUCATION: EQUINE STRANGLES

VACCINATION FOR STRANGLES

- It is recommended not to vaccinate during an outbreak or immediately after clinical infection (for up to about a year)
- Once recovered from active infection, 75 percent of horses have immunity for one to two years
- Blood antibody testing can help determine better timing for vaccination since vaccination of horses recently exposed to strangles may result in pupura hemorrhagica



HORSE HEALTH EDUCATION: EQUINE STRANGLES

PURPURA HEMORRHAGICA



This condition is caused by an over active immune response, which can result in limb and head swelling, sloughing of the skin, small hemorrhages on the gums and fever.



HORSE HEALTH EDUCATION: EQUINE STRANGLES

SO WHO SHOULD BE VACCINATED?

- Vaccination is only recommended in healthy horses with no fever or nasal discharge
- Horses who have not experienced an infection within a year
- Horses that travel routinely and are exposed to varied horse populations
- Broodmares prior to foaling if history of strangles on the farm



HORSE HEALTH EDUCATION: EQUINE STRANGLES

REMEMBER



- Initial vaccination requires a booster dose
- It takes about three to four weeks for immunity to develop – so leave enough time before transport or shows
- Consider the chance of exposure and your comfort with the level of risk



HORSE HEALTH EDUCATION: EQUINE STRANGLES

ADDITIONAL PREVENTATIVE MEASURES



If you have NOT had strangles on your farm, you still don't want it!

- A current health certificate for new arrivals should always be required
- Isolate new arrivals for two to three weeks and check temperatures daily
- Ask owners about history of strangles and consider testing



HORSE HEALTH EDUCATION: EQUINE STRANGLES

ADDITIONAL PREVENTATIVE MEASURES

- Use individual water buckets for each horse and disinfect routinely
- If shared water source, disinfect at least weekly
- When traveling to shows, bring your own feed, buckets and equipment and minimize use of shared stalls or pastures
- Group pastured horses according to age





HORSE HEALTH EDUCATION: EQUINE STRANGLES

IN SUMMARY



- Reduce your horse's risk of exposure with good management and clean equipment
- Involve your vet if you suspect infection
- Isolate and contain sick horses
- Disinfect, disinfect, disinfect!



HORSE HEALTH EDUCATION: EQUINE STRANGLES

Photos courtesy of

Michael Porter, DVM, Ph.D. • Gainesville, Florida

Chris Sanchez, DVM • University of Florida, Gainesville, Florida

**Dana Zimmel, DVM, DABVP, DACVIM
University of Florida, Gainesville, Florida**

**Rob Arnott, BSc, DVM • Saint John Valley Vet Services
Houlton, Maine**

**Amanda House, DVM, DACVIM
University of Florida, Gainesville, Florida**



the **HORSE**
YOUR GUIDE TO EQUINE HEALTH CARE



HORSE HEALTH EDUCATION: EQUINE STRANGLES

The AAEP would like to thank our partners for their support of the AAEP's Owner Education Programs.



Bayer HealthCare
Animal Health



Boehringer
Ingelheim



Intervet
Schering-Plough Animal Health



Pfizer Animal Health



Purina Mills

PLATINUM
PERFORMANCE[®]
Where good nutrition meets good medicine™



Nutrena™



LUITPOLD

IDEXX
LABORATORIES

COMPENDIUM
CONTINUING EDUCATION FOR VETERINARIANS™
EQUINE

the HORSE
YOUR GUIDE TO EQUINE HEALTH CARE

EQUUS

www.aaep.org/horseowner



For more horse health information,
visit our Web site:

www.aaep.org/horseowner